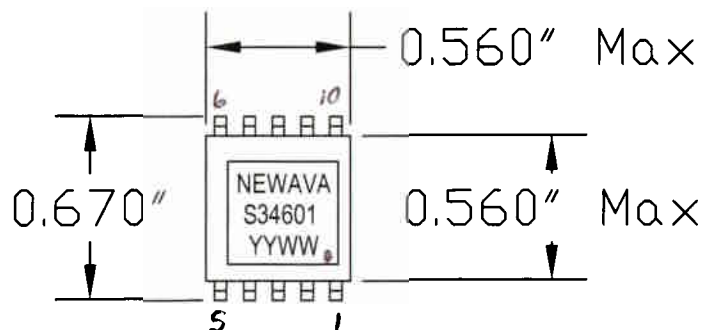


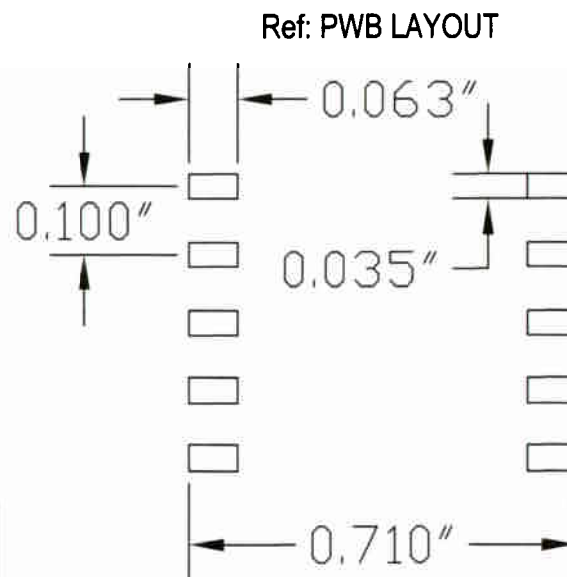
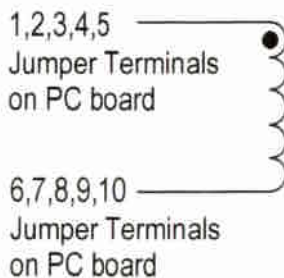
EP13 LM259X Inductor  
100 uHy 1.50 ADC



MECHANICALS: 0.500" Max Height  
0.560" Max Width of Body  
0.560" Max Length of Body  
Coplanarity of +/- 0.004" Across all Leads  
All pins may not be used.

ELECTRICAL SPECS:

- 1: INDUCTANCE: @ 10 kHz, 0.1 Vrms  
(1 thru 5 to 6 thru 10) = 100 - 130 uHy
- 2: DCRs:  
(1 thru 5 to 6 thru 10) = 0.090 Ohms Max.
- 3: SRF: 2.0 MHz Min
- 4: HIPOT: 500 VDC  
Winding to core (2 Sec., 5 mA Max)



Specifications at room temperature of 25 C.

A	2/28/03		KAM	Production Release	
REV.	DATE	ECN	BY	DESCRIPTION	
TOLERANCES ON				Newava Tech. Watertown, SD 57201 605-886-0264	100 uHy Inductor 1.50 ADC
.XXX	.XX	ANGLE			
+ -	+ -	+ -			
DRAWN:			DATE	SCALE	MODEL
CHECKED: -			-		
APPROVED: -			-	NEXT ASSY:	
THIS PRINT MUST NOT BE COPIED IN WHOLE OR IN PART OR USED DETRIMENTALLY TO OUR INTEREST				S34601	A
				SHEET 1 OF 1	