



AP2120N-3.2TRG1

Inombolo Yengxenywe: **AP2120N-3.2TRG1**

Incazelo Yomkhiqizo: IC REG LINEAR 3.2V 150MA SOT23

Isimo se-RoHS: Qondisa mahhala / i-RoHS Compliant

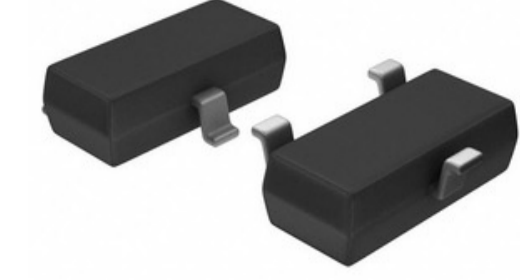
Amadokhumenti: [AP2120N-3.2TRG1.pdf](#)

Umkhiqizi / Umkhiqizo: Diodes Incorporated

Umkhumbi ovela: Hong Kong

Ukuthunyelwa Kwendlela: DHL/Fedex/TNT/UPS/EMS

[THUMELA UPHENYO](#)



Isithombe singaba ukumelwa. I-Bona imininingwane ngemininingwane yomkhiqizo.

Imininingwane yomkhiqizo

Inombolo Yengxenywe	AP2120N-3.2TRG1	Umkhiqizi	Diodes Incorporated
Incazelo	IC REG LINEAR 3.2V 150MA SOT23	Isimo samahhala sendawo / isimo se-RoHS	Qondisa mahhala / i-RoHS Compliant
Ishidi le-data	AP2120N-3.2TRG1.pdf		
Ukudonsa kwe-Voltage (Max)	0.5V @ 150mA	I-Voltage - I-Output (Min / Fixed)	3.2V
I-Voltage - I-Output (i-Max)	-	I-Voltage - Ukungena (i-Max)	6V
Iphakheji yedivaysi yensiza	SOT-23	Uchungechunge	-
Izici Zokuvikelwa	Over Current	Ukupakisha	Tape & Reel (TR)
Iphakheji / Icala	TO-236-3, SC-59, SOT-23-3	I-PSRR	65dB (1kHz)
Uhlobo lokuphuma	Fixed	Ukukhulwa kokukhipha	Positive
Ukushisa okusebenzayo	-40°C ~ 85°C	Inani labalawuli	1
Uhlobo lokufaka	Surface Mount	Izinga lokuzwela ukuthutha (MSL)	3 (168 Hours)
Isikhathi Sesikhathi Esiyisibonelo Sokukhiqiza	22 Weeks	Isimo samahhala sendawo / isimo se-RoHS	Lead free / RoHS Compliant
Incazelo ephelele	Linear Voltage Regulator IC Positive Fixed 1 Output 3.2V 150mA SOT-23	I-Current - Quiescent (Iq)	50µA
Ukuphuma kwamanje	150mA	Izici zokulawula	-

Imikhiqizo lehlobene

<p>AP2120N-3.0TRG1 Abakhiqizi: Diodes Incorporated Incazelo: IC REG LINEAR 3V 150MA SOT23 Landa: AP2120N-3.0TRG1.pdf</p> <p>RFQ</p>	<p>AP2120Z-3.3TRG1 Abakhiqizi: Diodes Incorporated Incazelo: IC REG LINEAR 3.3V 150MA TO92 Landa: AP2120Z-3.3TRG1.pdf</p> <p>RFQ</p>
<p>AP2120N-5.0TRG1 Abakhiqizi: Diodes Incorporated Incazelo: IC REG LINEAR 5V 150MA SOT23 Landa: AP2120N-5.0TRG1.pdf</p> <p>RFQ</p>	<p>AP2121AK-1.3TRE1 Abakhiqizi: Diodes Incorporated Incazelo: IC REG LINEAR 1.3V 200MA SOT23-5 Landa: AP2121AK-1.3TRE1.pdf</p> <p>RFQ</p>
<p>AP2120N-1.8TRG1 Abakhiqizi: Diodes Incorporated Incazelo: IC REG LINEAR 1.8V 150MA SOT23 Landa: AP2120N-1.8TRG1.pdf</p> <p>RFQ</p>	<p>AP2120N-2.5TRG1 Abakhiqizi: Diodes Incorporated Incazelo: IC REG LINEAR 2.5V 150MA SOT23 Landa: AP2120N-2.5TRG1.pdf</p> <p>RFQ</p>
<p>AP2121AK-1.2TRE1 Abakhiqizi: Diodes Incorporated Incazelo: IC REG LINEAR 1.2V 200MA SOT23-5 Landa: AP2121AK-1.2TRE1.pdf</p> <p>RFQ</p>	<p>AP2120N-3.3TRG1 Abakhiqizi: Diodes Incorporated Incazelo: IC REG LINEAR 3.3V 150MA SOT23 Landa: AP2120N-3.3TRG1.pdf</p> <p>RFQ</p>
<p>AP2121AK-1.2TRG1 Abakhiqizi: Diodes Incorporated Incazelo: IC REG LINEAR 1.2V 200MA SOT23-5 Landa: AP2121AK-1.2TRG1.pdf</p> <p>RFQ</p>	<p>AP2120N-1.3TRG1 Abakhiqizi: Diodes Incorporated Incazelo: IC REG LINEAR 1.3V 150MA SOT23 Landa: AP2120N-1.3TRG1.pdf</p> <p>RFQ</p>
<p>AP2120N-1.5TRG1 Abakhiqizi: Diodes Incorporated Incazelo: IC REG LINEAR 1.5V 150MA SOT23 Landa: AP2120N-1.5TRG1.pdf</p> <p>RFQ</p>	<p>AP2120N-2.8TRG1 Abakhiqizi: Diodes Incorporated Incazelo: IC REG LINEAR 2.8V 150MA SOT23 Landa: AP2120N-2.8TRG1.pdf</p> <p>RFQ</p>

Amathegi ahlobene

Diodes Incorporated AP2120N-3.2TRG1

Intengo ye-AP2120N-3.2TRG1

Idathasheet le-AP2120N-3.2TRG1 PDF

Isitokwe se-AP2120N-3.2TRG1

Diodes Incorporated AP2120N-3.2TRG1

I-Diodes Incorporated AP2120N-3.2TRG1

I-Zetex Semiconductors (Diodes Incorporated) AP2120N-3.2TRG1

Umsabalalisi we-AP2120N-3.2TRG1

Izithombe ze-AP2120N-3.2TRG1

I-AP2120N-3.2TRG1 Idatha Elayishiwe

Thenga i-AP2120N-3.2TRG1

Umhlinzeki we-Diodes Incorporated

I-Diodes Inc AP2120N-3.2TRG1

Umhlinzeki we-AP2120N-3.2TRG1

Isithombe se-AP2120N-3.2TRG1

Idathasethi ye-AP2120N-3.2TRG1

Thenga i-Diodes Incorporated AP2120N-3.2TRG1

Umsabalalisi we-Diodes Incorporated

I-Pericom Semiconductor AP2120N-3.2TRG1